

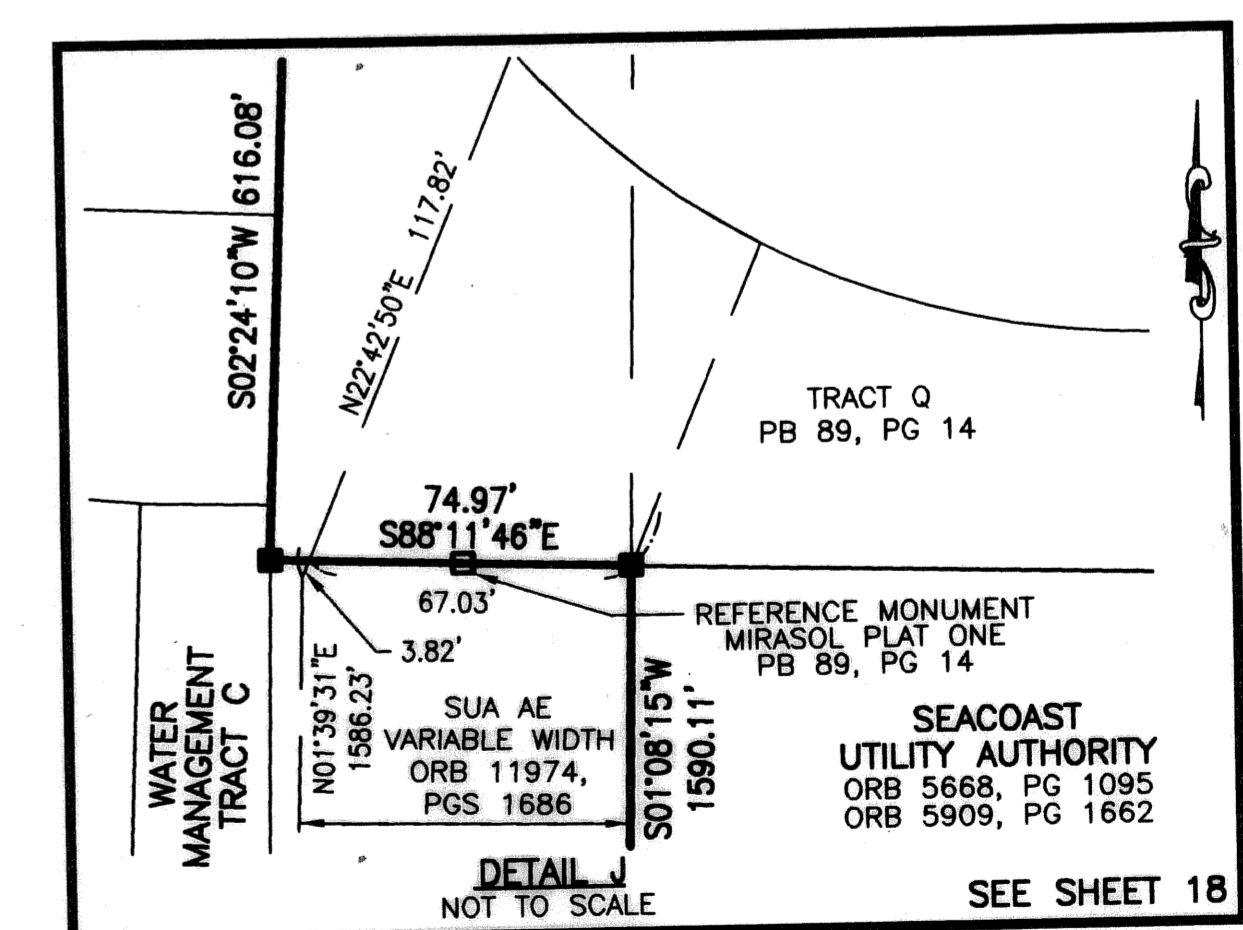
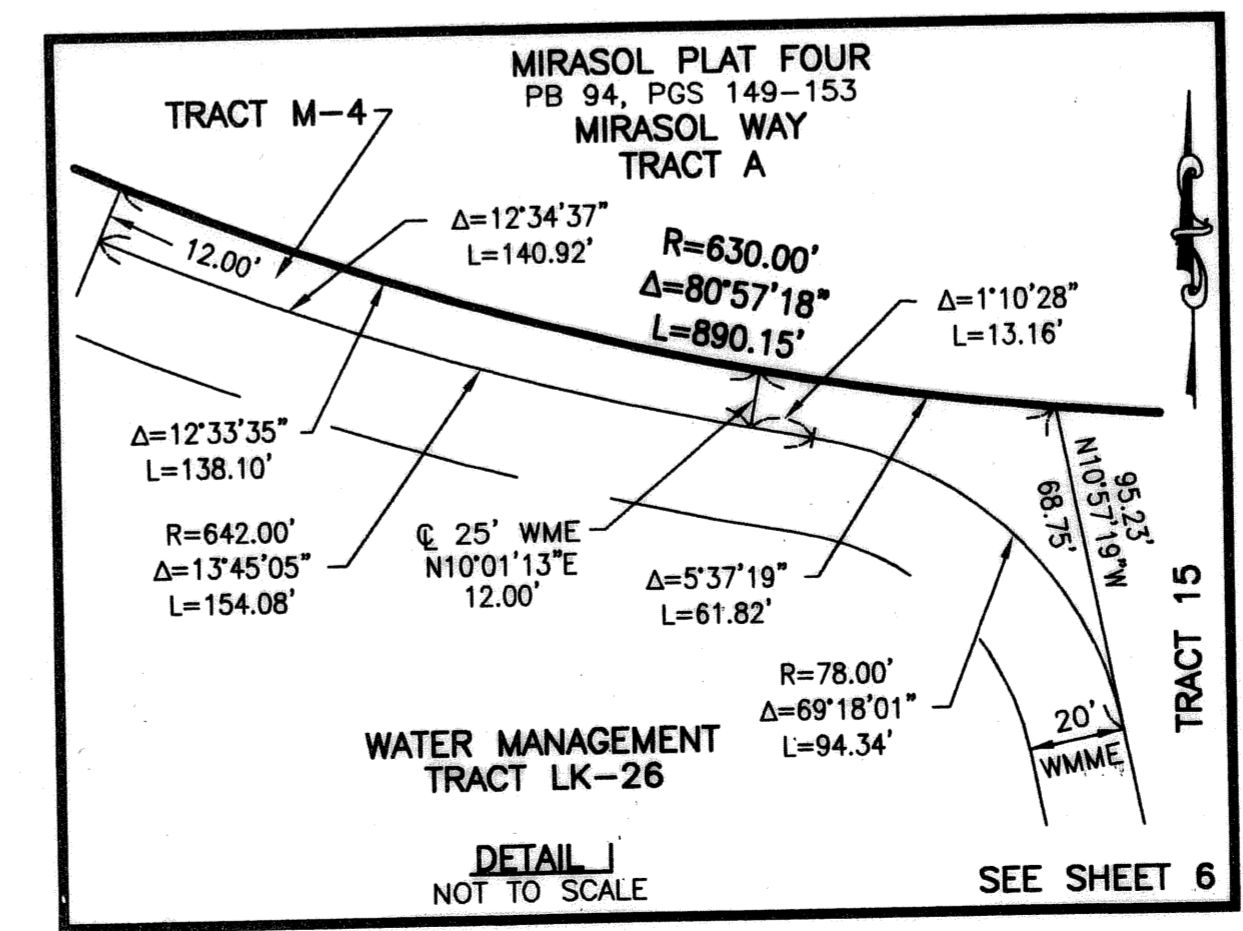
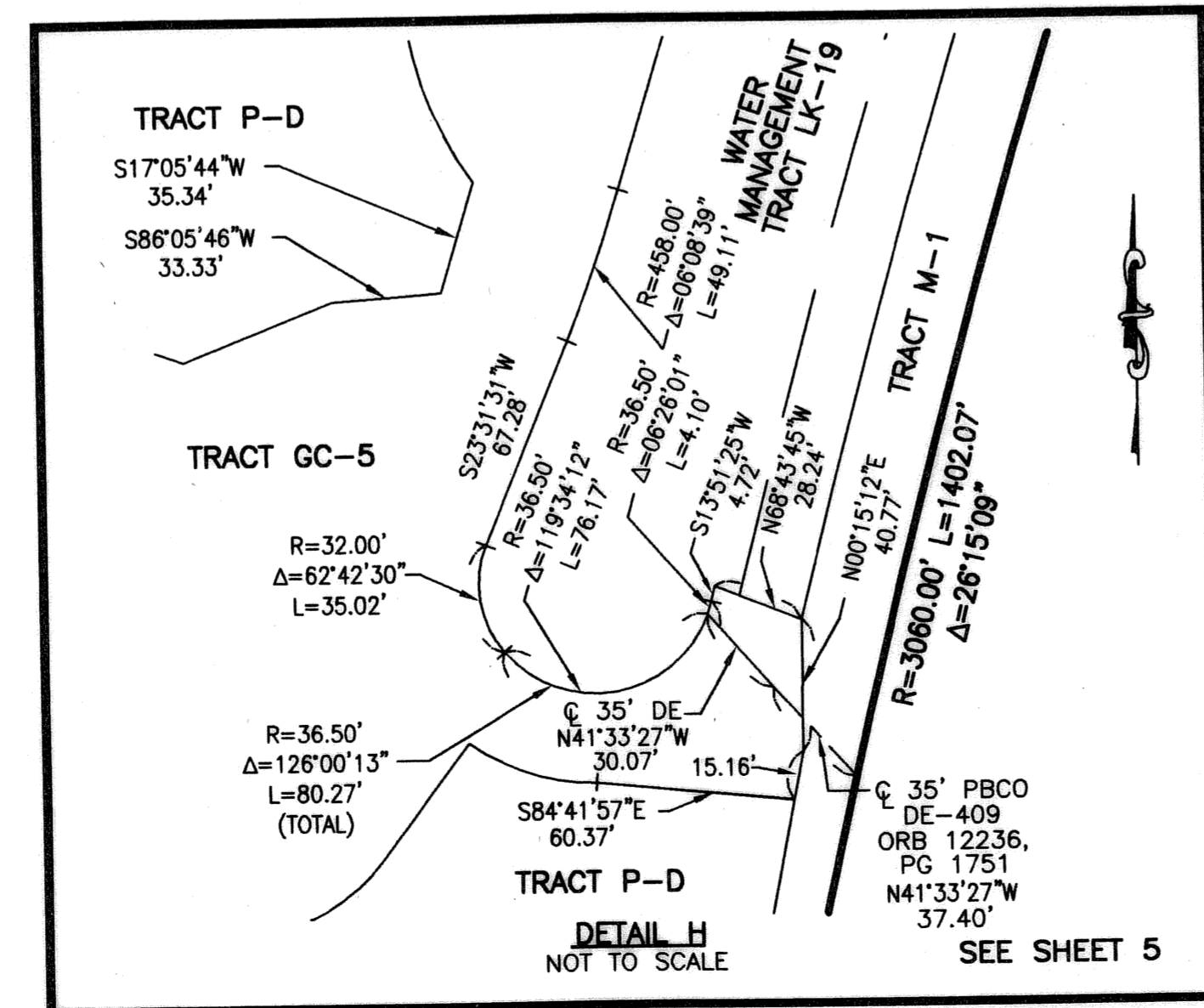
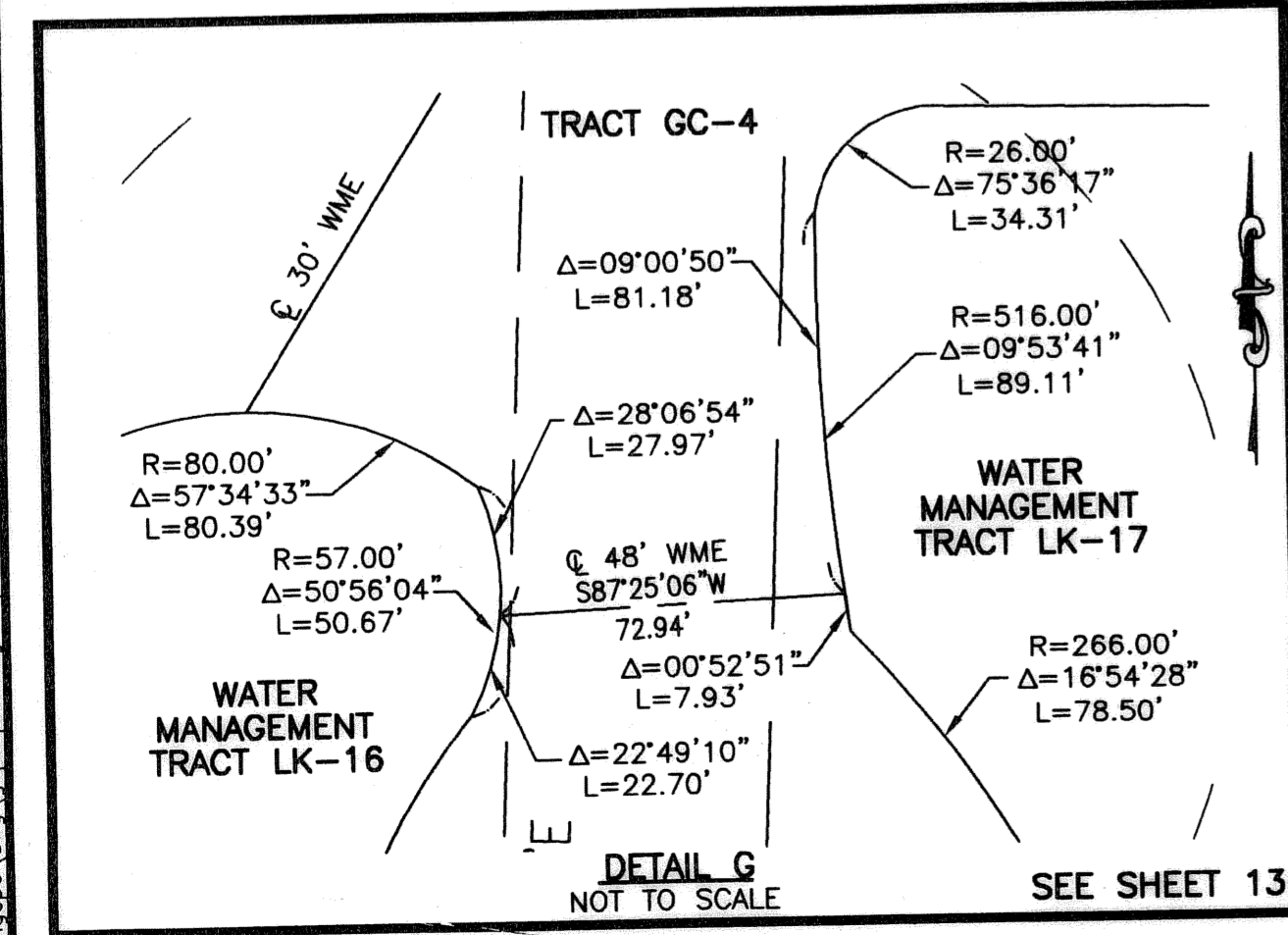
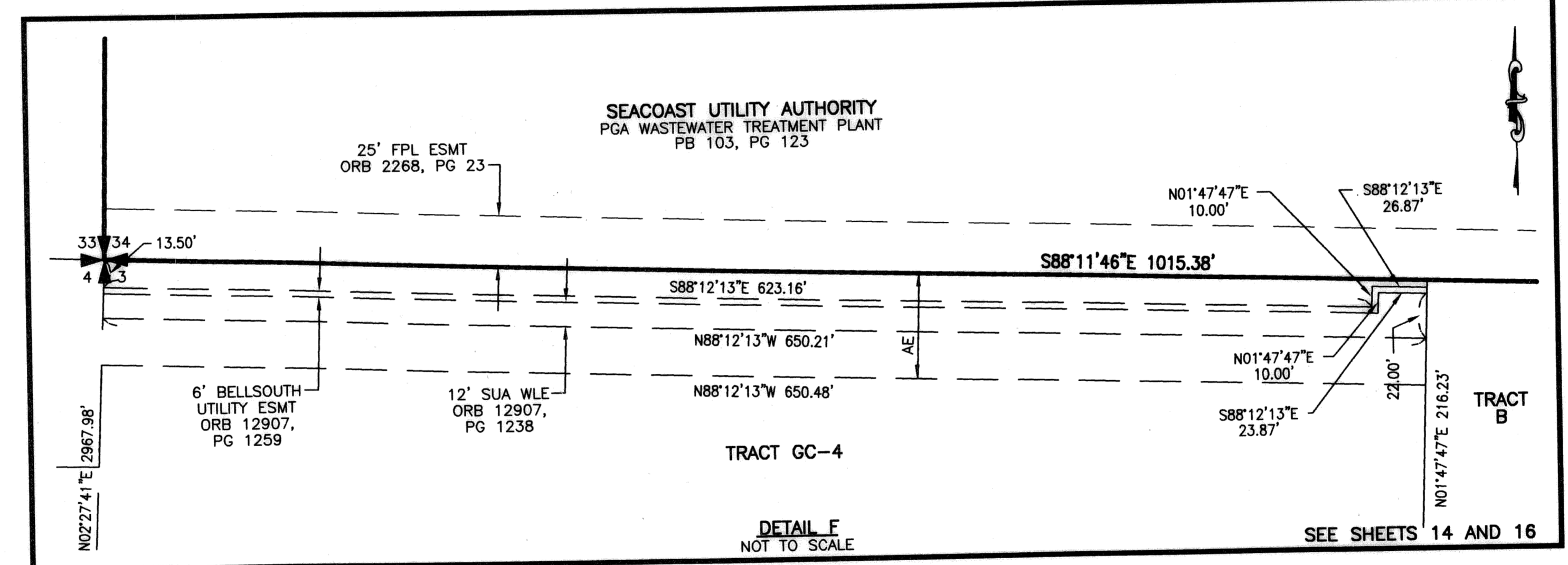
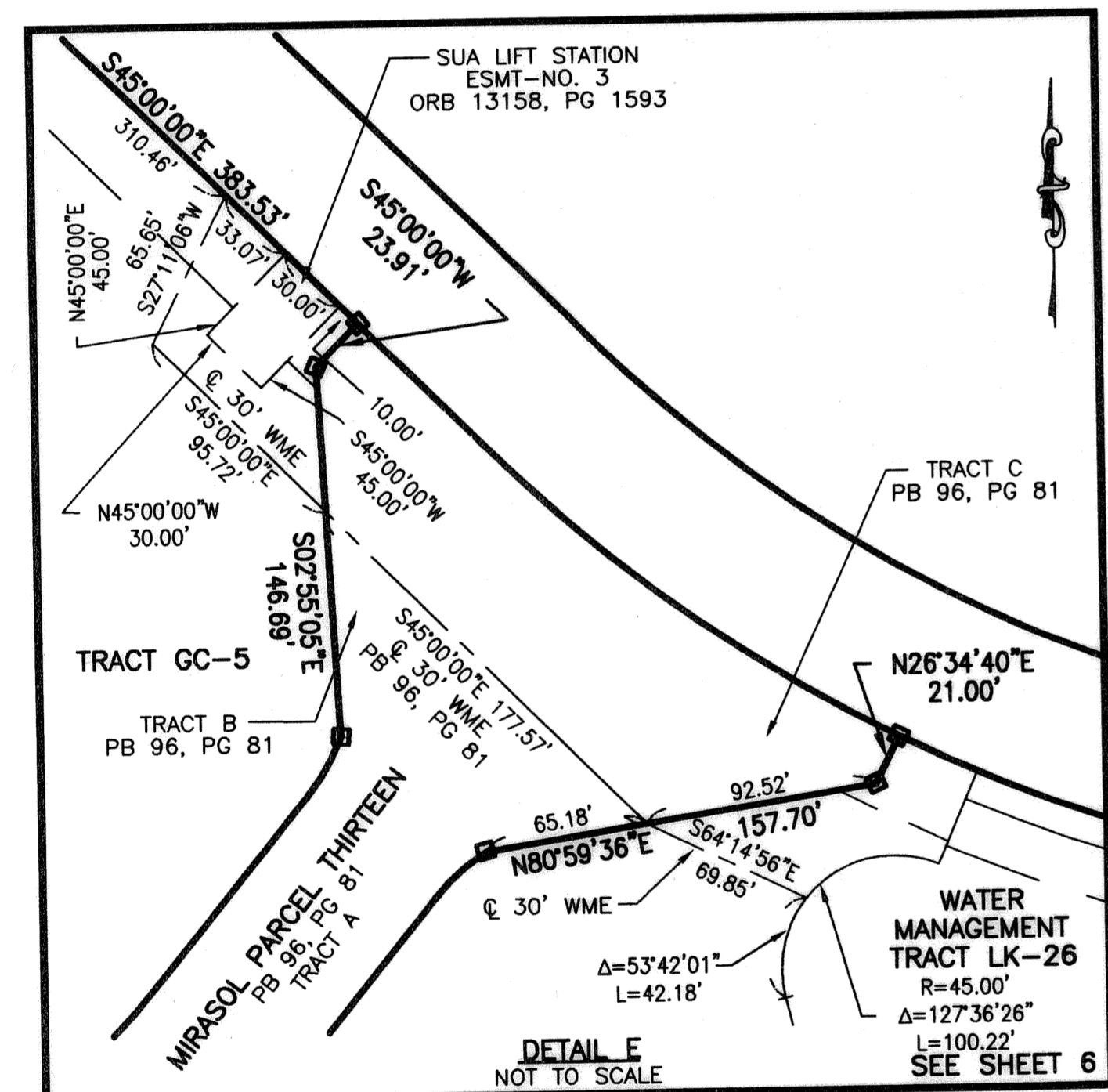
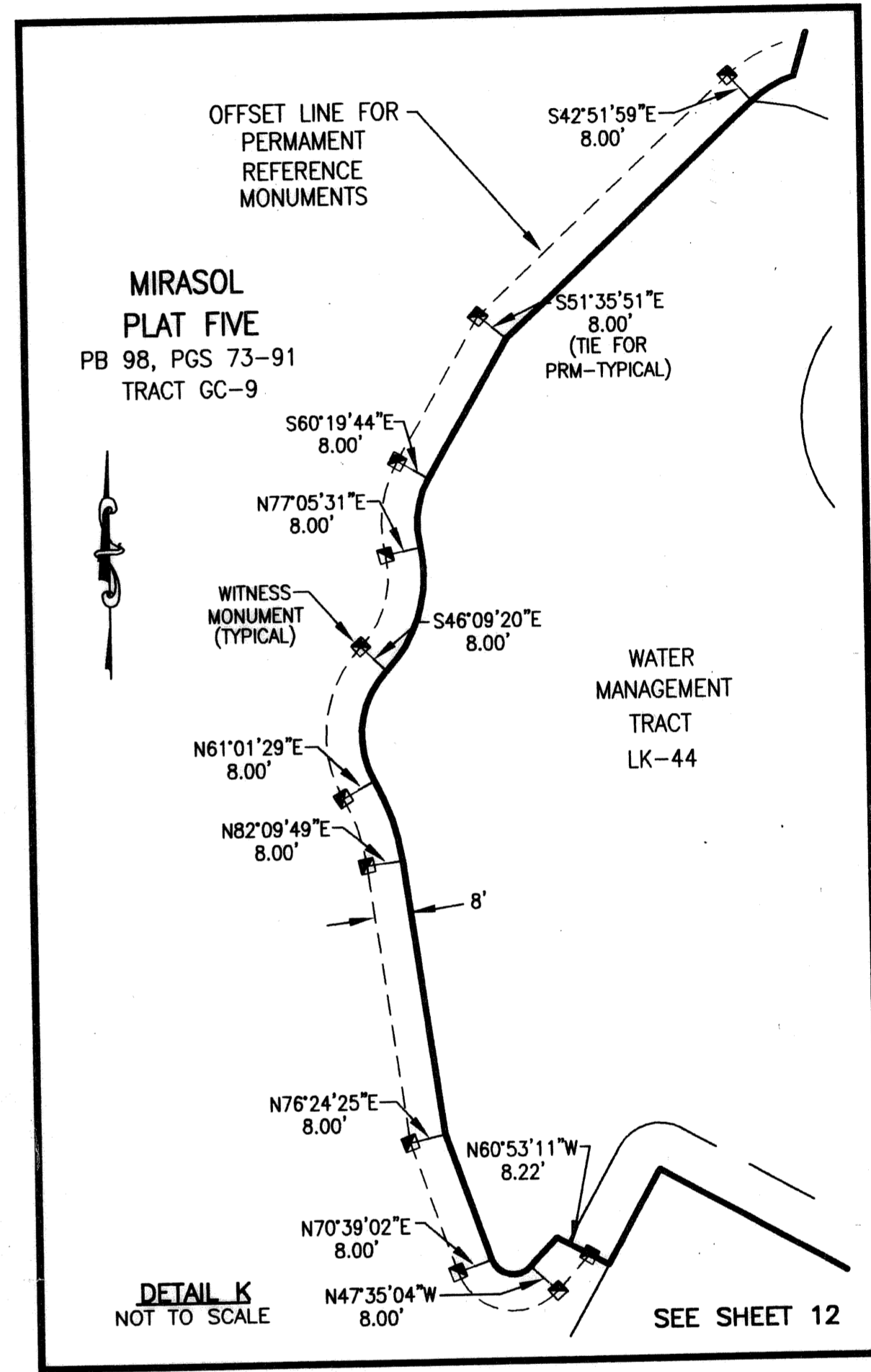
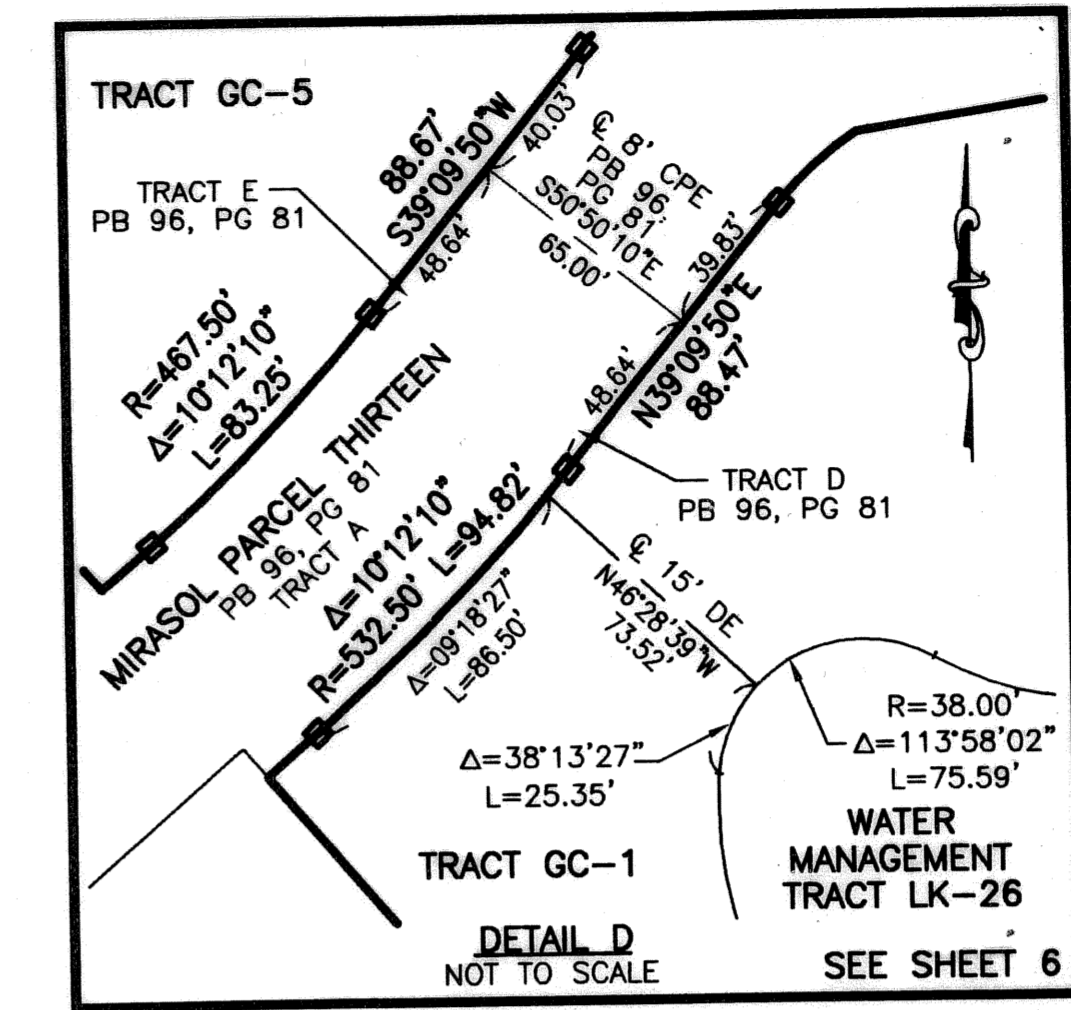
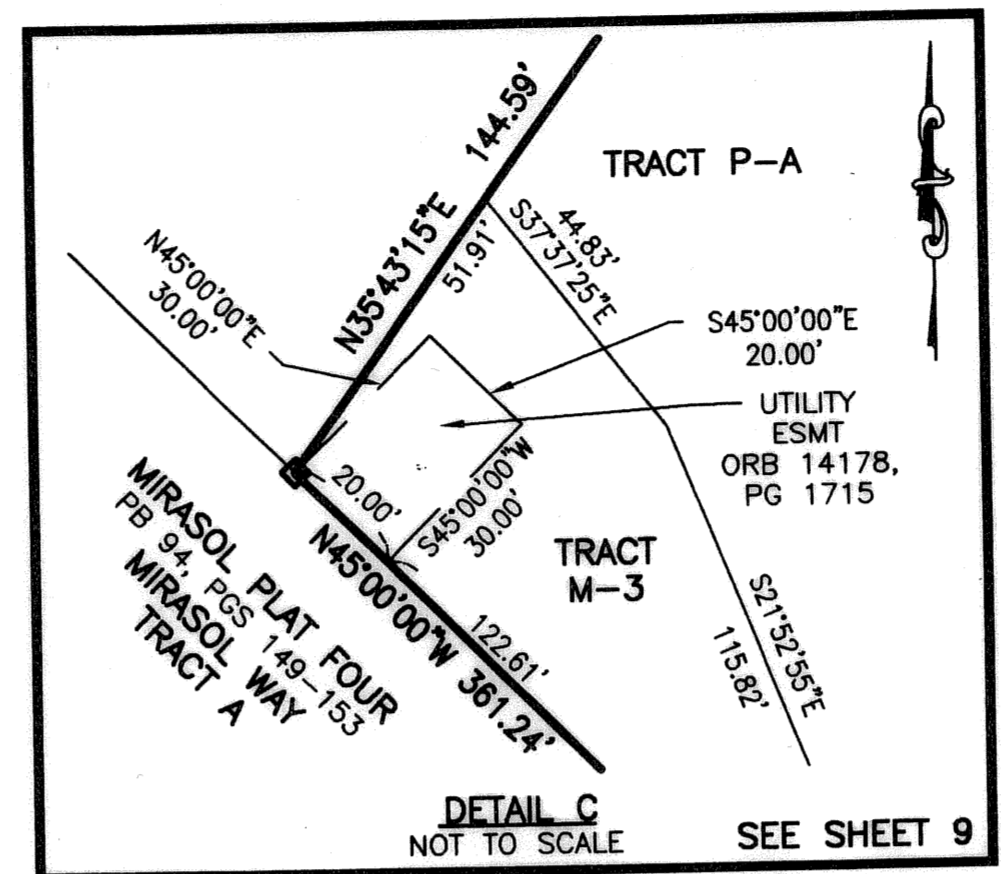
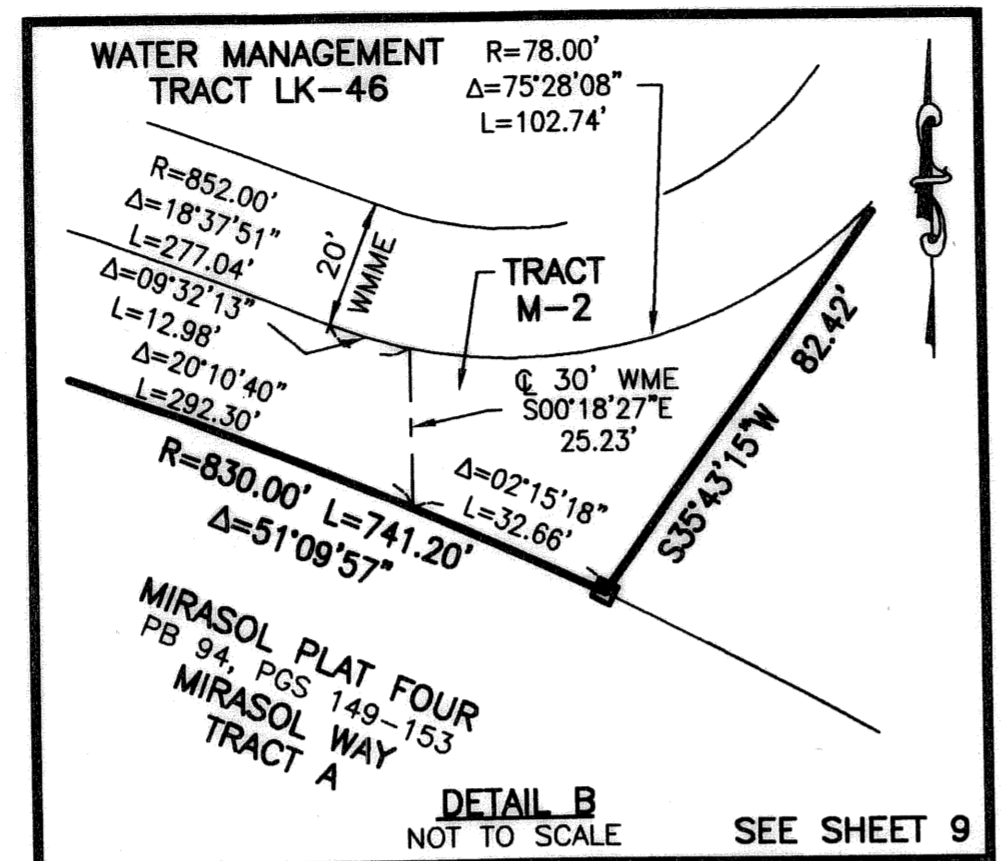
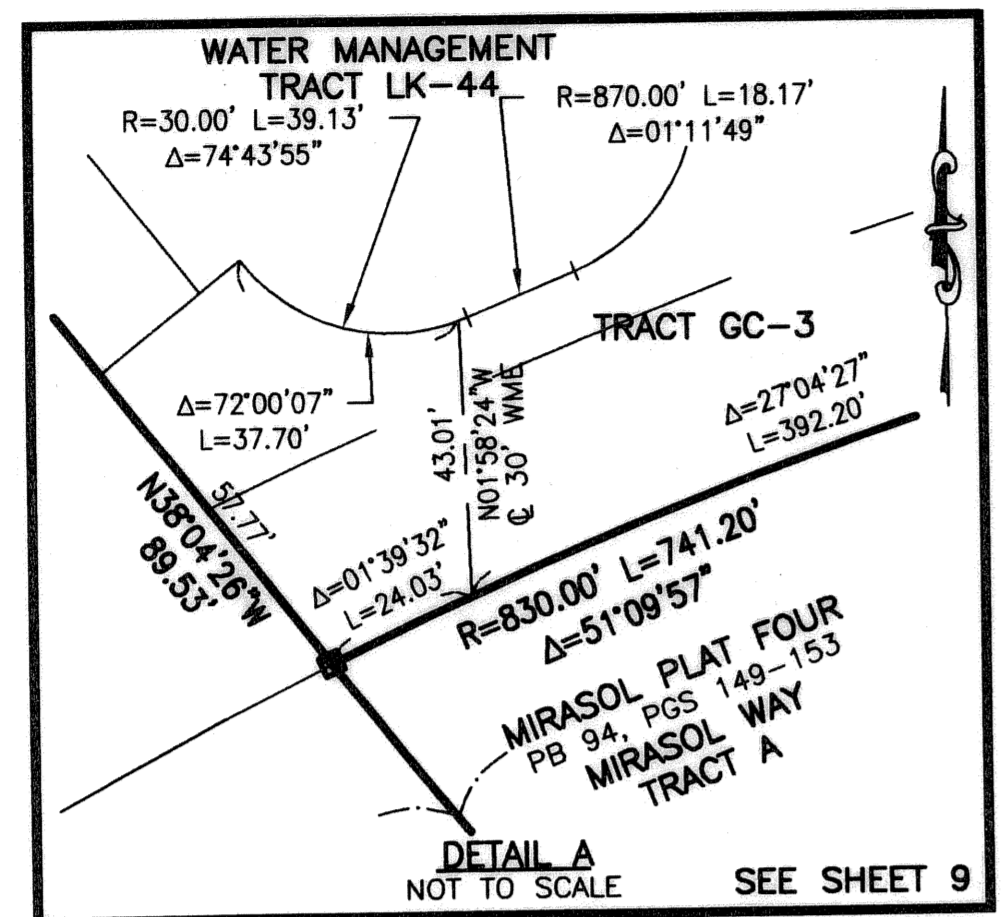
STATE OF FLORIDA
COUNTY OF PALM BEACH
THIS PLAT WAS FILED FOR
RECORD _____
THIS _____ DAY OF _____
AD, 2005 AND DULY RECORDED
IN PLAT BOOK _____ ON PAGES

THROUGH _____
SHARON R. BOCK, CLERK
BY: _____, D.C.

CIRCUIT COURT SEAL

MIRASOL PLAT SIX

PART OF GOLF DIGEST P.C.D.
BEING IN SECTION 33, TOWNSHIP 41 SOUTH, RANGE 42 EAST,
AND SECTIONS 03 AND 04, TOWNSHIP 42 SOUTH, RANGE 42 EAST,
CITY OF PALM BEACH GARDENS, PALM BEACH COUNTY, FLORIDA
SHEET 21 OF 21



THIS INSTRUMENT WAS PREPARED BY MARY HANNA CLODFELTER, P.S.M. IN THE OFFICES OF MOCK, ROOS & ASSOCIATES, INC., 5720 CORPORATE WAY, WEST PALM BEACH, FLORIDA 33407.

SCALE: 1" = 80'
P.A. NO.: 99374.00
DATE: MAY 2003
DRAWING NO.: 41-42-33-31

FLORIDA L.B. NO. 48

MOCK • ROOS
ENGINEERS • SURVEYORS • PLANNERS
5720 Corporate Way, West Palm Beach, Florida 33407
(561) 683-3113, fax 478-7248

MIRASOL PLAT SIX
PART OF GOLF DIGEST P.C.D.
BEING IN SECTION 33,
TOWNSHIP 41 SOUTH, RANGE 42 EAST,
AND IN SECTIONS 03 AND 04,
TOWNSHIP 42 SOUTH, RANGE 42 EAST,
CITY OF PALM BEACH GARDENS,
PALM BEACH COUNTY, FLORIDA

REV.: 01-31-05
CAD FILE: TAYLGP6\GCP6R02